

March 21, 2011

Schematic Design Presentation

New Liberty Hill High School

Liberty Hill Independent School District

imagine create

Huckabee

inspire

Acknowledgements	3
Narrative	4
Site Aerial	6
Site Plan	7
Floor Plans (Main Facility)	8
Floor Plans (Ancillary Facilities)	15
Mechanical Section	21
Renderings	22
APPENDIX	
Color Boards	30
Base Bid Floor Finish Plans	32
Alternate Bid Floor Finish Plans	34
Space Program	36
Schedule	37



Administration

Dr. Rob Hart	Superintendent
Tony Stephens	Board President
Clay Cole	Board Vice President
David Nix	Board Secretary
Joe "Scooter" Lenox	Board Member
Leslye Pogue	Board Member
Alfie Perrin	Board Member
Shawn Roberts	Board Member

Liberty Hill ISD Design Team

Dr. Rob Hart	Superintendent
Robert Parks	Assistant Superintendent
Frank Watson	Business Manager
Bobby Mabry	Principal, Liberty Hill High School
Jerry Vance	Athletic Director
Paul Urban	Director of Technology
Anna Martin	Food Services Director
Andy Pogue	Maintenance Director
Daren Kirbo, AIA	Principal-in-Charge, Huckabee
Josh Brown	Assistant Principal-in-Charge, Huckabee
Doug Bensen, RA	Director of Design, Huckabee

Project Design Team

Architecture
Huckabee
Fort Worth, TX

Technology Design
Huckabee
Fort Worth, TX

Interiors
Huckabee
Fort Worth, TX

Structural Engineering
Huckabee
Fort Worth, TX

MEP Engineering
Romine, Romine & Burgess
Fort Worth, TX

Civil Engineering & Landscaping
Cunningham Allen, Inc.
Austin, TX

Kitchen Consultant
Ackerman Barnes
Irving, TX

Acknowledgements



Introduction

In 2010, the Liberty Hill community passed a bond election to support the growing student population for Liberty Hill ISD. The approved funding included plans for a new 1,600-student high school. The new main facility will be a 2-story, 280,000-square-foot building with an additional 40,000 square-feet for ancillary buildings to support athletics, concessions, restrooms and storage.

Site

The newly acquired 96-acre site is located west of the city of Liberty Hill on the northwest corner of County Road 277 and State Highway 29. The western part of the site rises gently up to a natural crown where the main building will be located. The proposed site will have four access points providing dedicated traffic flow through the site ; one at County Road 277 along the east edge of the property for athletics and a future school, a dedicated student access drive, a primary looped parent/visitor drive and a bus access drive along the west edge of the property. Based on TXDOT data, a traffic signal may be installed at the primary entrance to allow

for eastbound egress from the site onto State Highway 29.

The main building will sit on a crown on the central, west part of the site facing south towards State Highway 29. Athletic amenities will be located on the northeast part of the site. The baseball, softball, tennis courts, practice fields and visitor access to the stadium will be clustered around a pedestrian "mall" (with fire truck access only) and anchored by the baseball field house/concessions building. The southeast corner of the site has been reserved for a future school building.

Three detention and water quality areas with gentle slopes will capture storm water run-off from the developed site along State Highway 29.

Parking

The new high school complex will require approximately 1,250 parking spaces based on a 4:1 ratio to support the initial 5,000 seats for the football stadium. This requirement exceeds the approximate 640 parking spaces required for the main building. The main entrance parking lot will have a capacity of approximately 160 spaces; the front student parking lot approximately 300 spaces; the back student/staff parking lot 525 spaces (with a clear area for a full band practice area); and the student/event parking area approximately 300 spaces. A separate bus parking area has been included adjacent to the football field house. Some additional parking is provided adjacent to the shop area and the main field house for deliveries and staff. Buses will have a dedicated drop-off lane along the back of the main facility. (See Site Plan: Parking Summary)

Building Configuration

The main building is comprised of three main elements: the core, the instructional wing and the fine arts/athletic wing. Overall, the proposed design is a semi-compact design for functional efficiency. The reception/administration module



is centrally located within the core for ease of access to all parts of the building. The exterior, curved main entry wall gathers visitors into the building with "open arms" into a secured vestibule. All visitors must check-in before proceeding through electronically secured doors to the rest of the building. The main lobby opens up into a two and a half story "commons area" that is the focal point of the facility. A main stair connects the 2-story instructional wing to this commons area. The cafeteria, open study areas, bus drop-off connector, administration and the second floor library all front onto this space.

The commons area is also the primary entry into each of the four instructional neighborhoods (Math, Foreign Languages, English, and Social Studies) with a Science module centrally located between the other neighborhoods. These areas can be secured after hours. An elevator provides access to the second floor and to the adjacent library which can be accessed independently from the instructional areas. A computer lab and meeting room complement the library's functionality. Each of the four instructional neighborhoods has an entry vestibule with display cases, a computer lab, restrooms and a teacher workroom, integral to the function of the surrounding classrooms.

At the back of the 2-story instructional wing is the single story Business/Technical/Vocational instructional area with a separate loading area for shop and the culinary arts. The shop will include separate fume hoods for welding stations and a separate isolated HVAC system to mitigate any odor contamination with the main building air supply.

Directly across from administration, and part of the building's core area, is a mini-platform that serves both the commons space and the cafeteria for both formal and informal presentations and student activities. The cafeteria is immediately adjacent to the bus drop-off in the back of the building and convenient for early morning arrivals. The kitchen and "back of house" functions such as receiving, central storage, and main custodial, main electrical and mechanical, and main fire riser provide operational support for the facility.



Narrative

Located on a secured, dedicated sound isolated corridor in the northeast corner with a vehicular loading zone is the Fine Arts department complete with two art rooms, a large band hall with five practice rooms (fully sound isolated) including one virtual room, a percussion storage room with direct access to the exterior with a series of roll-up doors, oversized doors with access to the practice area in the parking lot and color guard uniform storage in a mezzanine above the practice rooms. There is also a choir room with robe storage and a dance room with dedicated storage.



The main gym will include competition basketball and volleyball, as well as cross court basketball and volleyball. The main building athletic lockers areas are located under the bleachers. The boys' locker rooms are on one side and the girls' on the other on an isolated dedicated corridor. Each of the varsity programs will have direct access to the gym along the west end of the court. Visitors will use the PE locker rooms and access the court from the east end. The practice gyms include fixed bleacher seating for 500 with storage underneath. An open net divider will separate the two practice courts and can be vertically lifted for to create a large combined space.

Two field houses support the outside athletic programs; one for football which will include a weight room, trainer's room, Athletic Director's office, coaches' offices and lockers for freshmen, junior varsity and varsity programs. The second field house will include baseball, softball, soccer and tennis, as well as concessions and restrooms.

Access Control

Part of the planning process included the identification of controlled access throughout the building. For example, the front entrance will include a secured vestibule by which all visitors (and students after the start of school) will need to check-in before passing through electronic doors. Egress is always free and open to all occupants. Spaces like the library and the meeting room will have limited access to the core common areas for after-hour events. The instructional areas can be closed off from the core areas during any event.

Similarly, the auditorium and gym are layered with access controls and can act independently from each other and from the rest of the building. Someone attending a basketball game would not necessarily have access to the auditorium or even to the cafeteria. Likewise, a visitor to a choir or drama performance would not have access to the gym or to the other parts of the building. The practice gyms will have separate restrooms and access to the PE locker rooms (for use by visiting teams) so they can be isolated for after-hours or for weekend use from the rest of the building. Band can access the supporting classrooms from the parking lot, the bus drop-off or the loading zone without entering into the rest of the building.

Building Systems

The new high school will include durable and energy efficient building systems such as:

- Geothermal ground source heating and air-conditioning with occupancy sensors, automated direct digital controls (DDC) and an integrated energy management system;
- Equipment mezzanines;
- Energy efficient low e-glass windows with thermal break window frames;
- Insulated, low maintenance masonry wall systems;
- New energy efficient light fixtures such as T-5 fluorescent lamps in the gyms with instantaneous on-off capabilities;
- Natural daylight;
- Durable wall (burnished block) and floor surfaces in public corridors and common areas;
- Durable carpet tiles with antimicrobial properties and high recycle content backing;
- A combination of high reflectance single ply roof and standing seam metal roofs for lasting durability; and,
- Technology with primary fiber optic cabling to support current and future technology demands for computers, security (cameras) and access controls.



Parking Summary	
Student Parking	340
Student/Staff Parking	560
Visitor Parking	160
Student/Event Parking	300
Total Parking	1,360

Alternate Parking	110
-------------------	-----

FOR SECURITY PURPOSES, THE SITE AND FLOOR PLAN HAVE BEEN REMOVED;
PLEASE CONTACT THE DISTRICT FOR A COPY.

FOR SECURITY PURPOSES, THE SITE AND FLOOR PLAN HAVE BEEN REMOVED;
PLEASE CONTACT THE DISTRICT FOR A COPY.

FOR SECURITY PURPOSES, THE SITE AND FLOOR PLAN HAVE BEEN REMOVED;
PLEASE CONTACT THE DISTRICT FOR A COPY.

FOR SECURITY PURPOSES, THE SITE AND FLOOR PLAN HAVE BEEN REMOVED;
PLEASE CONTACT THE DISTRICT FOR A COPY.

FOR SECURITY PURPOSES, THE SITE AND FLOOR PLAN HAVE BEEN REMOVED;
PLEASE CONTACT THE DISTRICT FOR A COPY.

FOR SECURITY PURPOSES, THE SITE AND FLOOR PLAN HAVE BEEN REMOVED;
PLEASE CONTACT THE DISTRICT FOR A COPY.

Business, Vocational and Technical Enlarged First Floor Plan

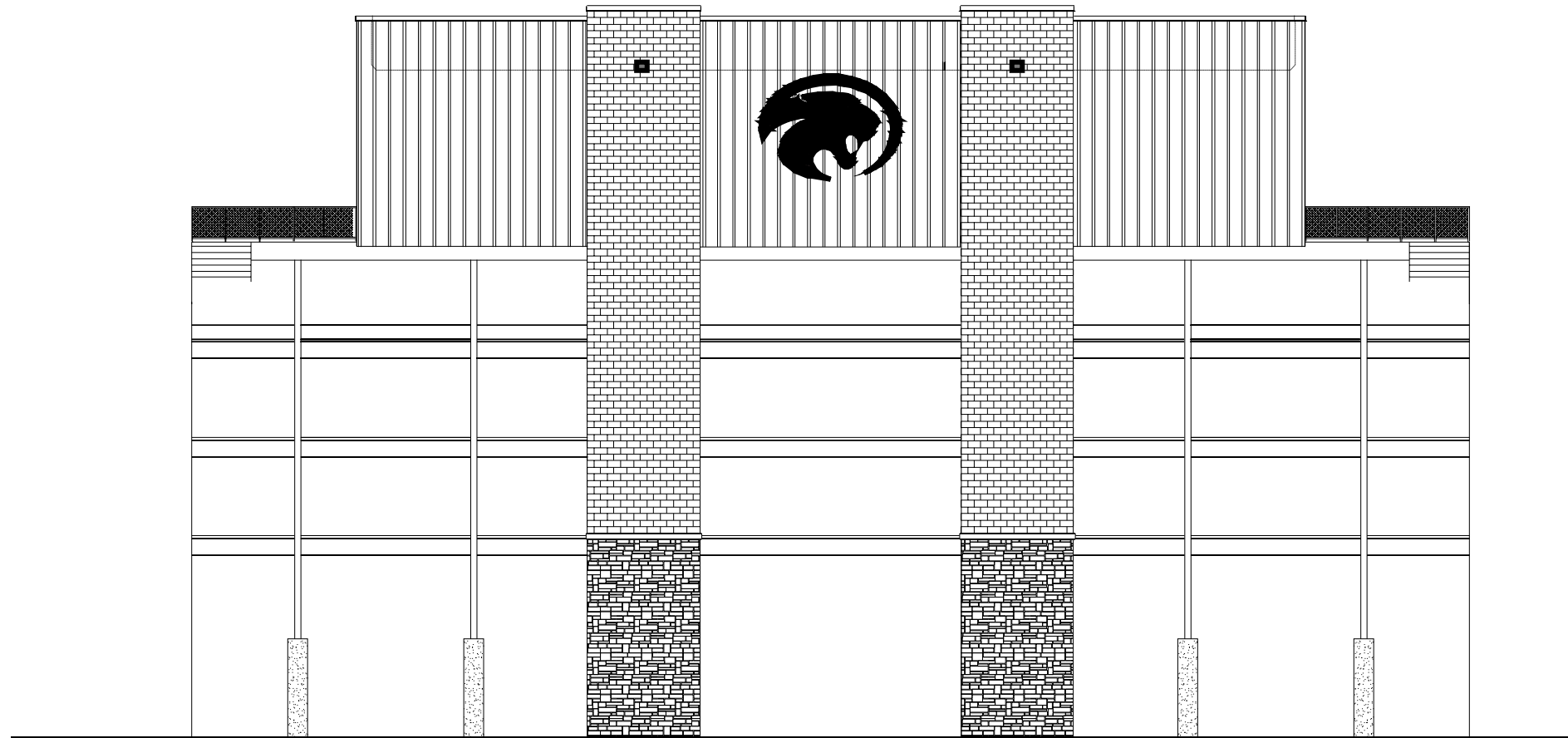
FOR SECURITY PURPOSES, THE SITE AND FLOOR PLAN HAVE BEEN REMOVED;
PLEASE CONTACT THE DISTRICT FOR A COPY.

FOR SECURITY PURPOSES, THE SITE AND FLOOR PLAN HAVE BEEN REMOVED;
PLEASE CONTACT THE DISTRICT FOR A COPY.

FOR SECURITY PURPOSES, THE SITE AND FLOOR PLAN HAVE BEEN REMOVED;
PLEASE CONTACT THE DISTRICT FOR A COPY.



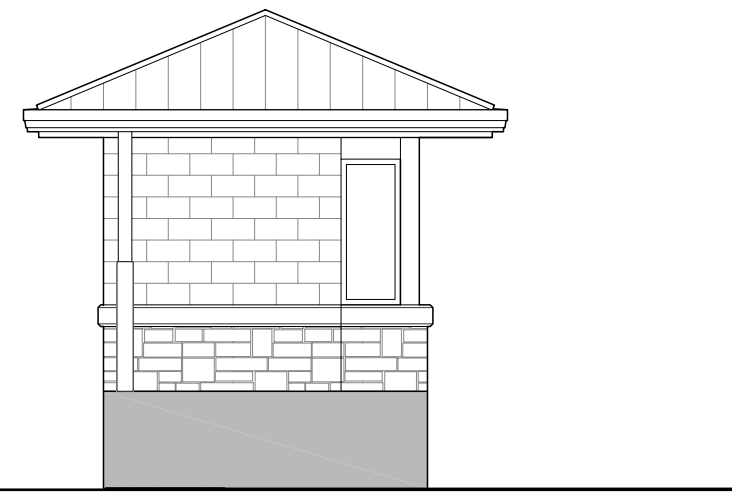
Concessions/Restrooms



Football Press Box

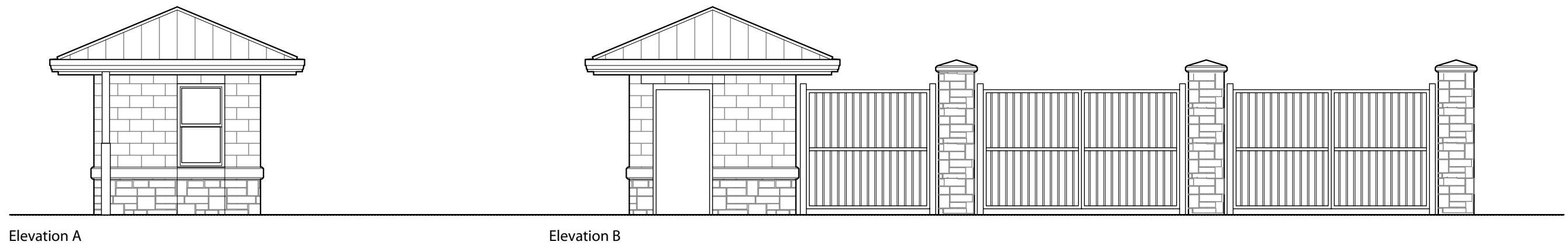


Elevation A



Elevation B

Baseball/Softball Press Box



Elevation A

Elevation B

Ticket Booths/Entry Gates



Exterior Rendering – Overall



Exterior Rendering – East View



Exterior Rendering – Main Entrance



Exterior Rendering – West View



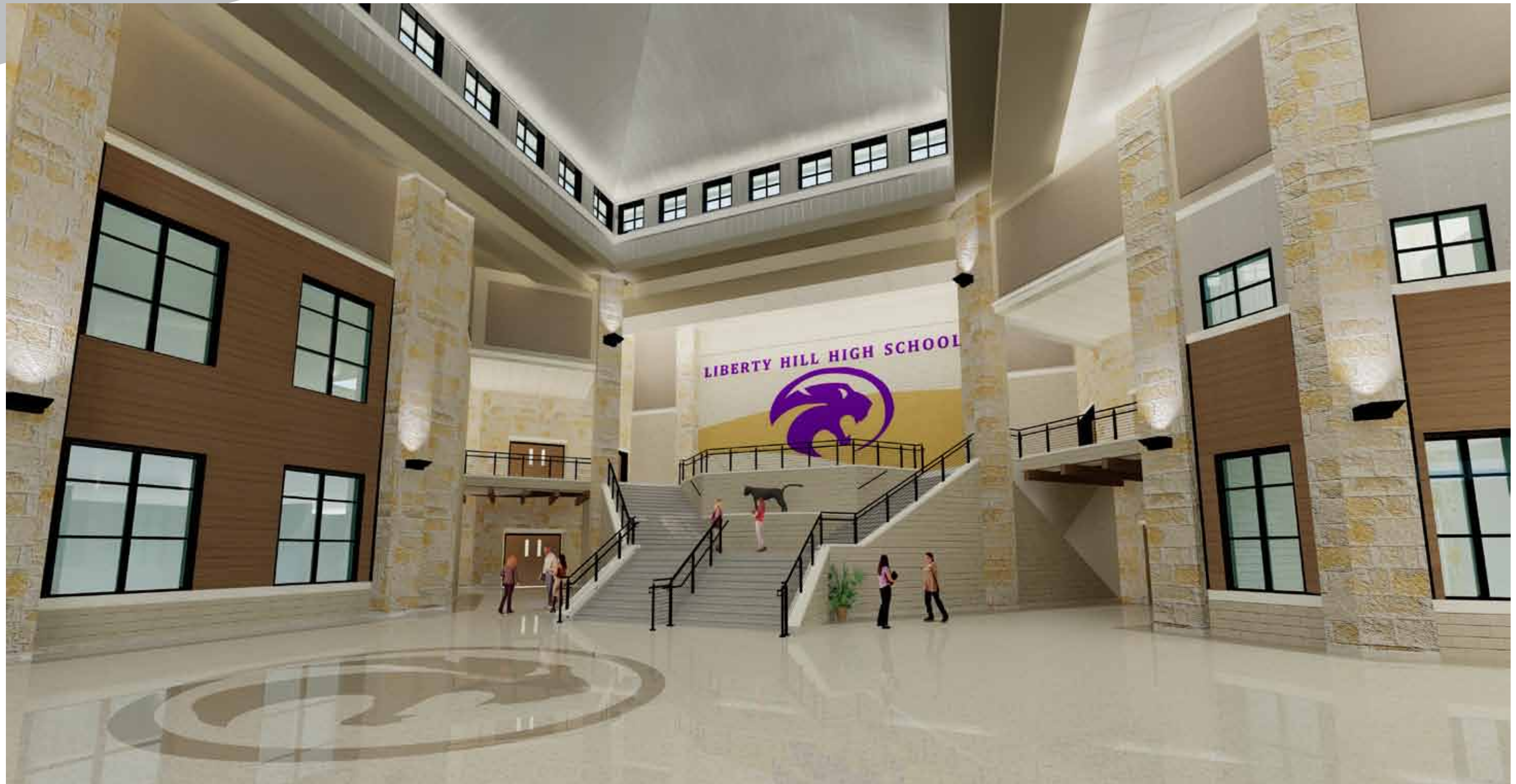
Exterior Rendering – Academic Wing



Exterior Rendering – Cafeteria Entrance



Interior Rendering – Main Entrance



Interior Rendering – Main Stairs



Interior Rendering – Gym Lobby

Appendix

Liberty Hill High School

Liberty Hill Independent School District

Huckabee



View of Main Lobby



View of Gym and Auditorium Lobby



Anodized Aluminum



Wall Paint



Wash Stations



Countertops



Wood Finish



Toilet Room Floors and Walls, Restroom Walls



Library Flooring, Alternate Classroom and Office Flooring



Alternate Kitchen Flooring



Shower Flooring, Base Bid Kitchen and Restroom Flooring



Rubber Base



Base Bid Classroom and Corridor Flooring



Alternate Corridor and Restroom Flooring

Liberty Hill High School

Liberty Hill Independent School District

Huckabee



Exterior View



Exterior View



Exterior Metal Roofing and Fascia



Exterior Door and Window Frames



Exterior Steel



Concrete Masonry Units



Natural Stone



Color Legend

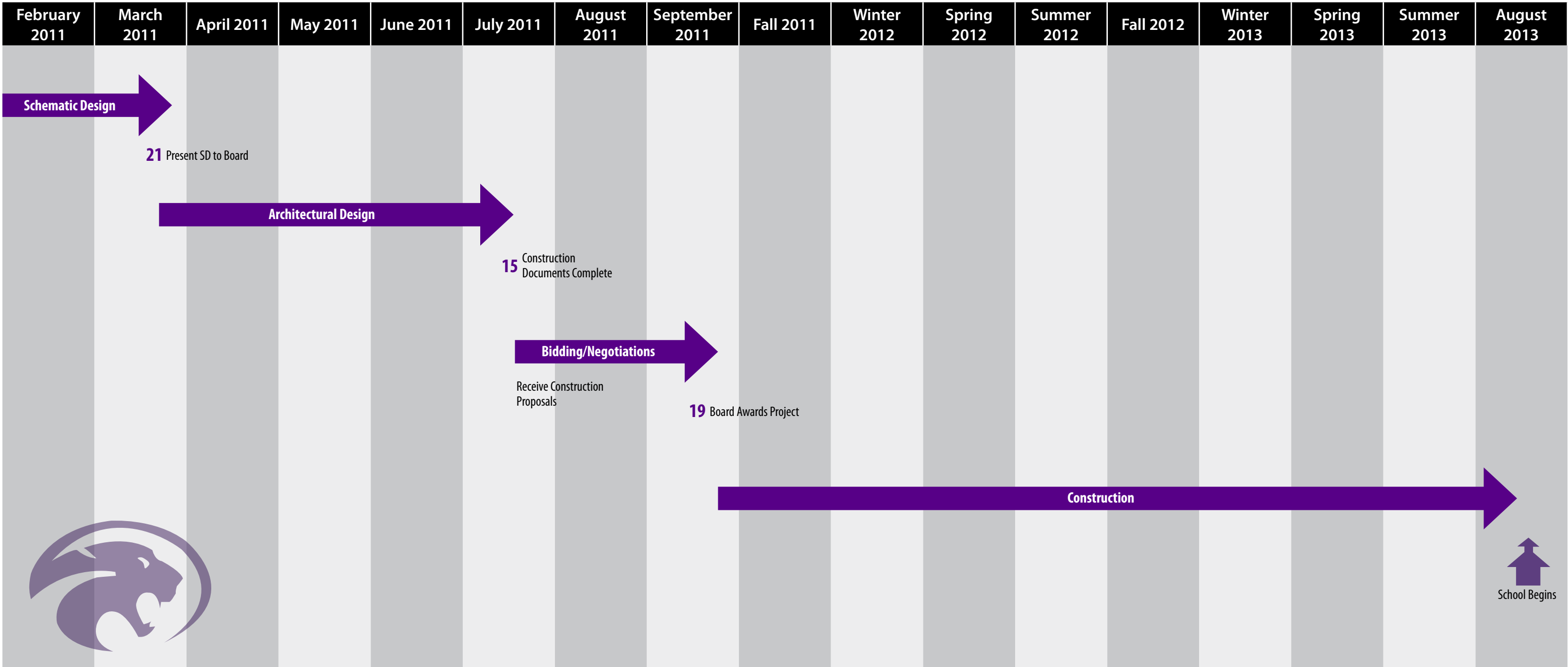
VCT	Rubber
Carpet	Tile
Concrete	Epoxy
Masonite	Wood
Black VCT	

Base Bid: Second Floor Finish Plan

FOR SECURITY PURPOSES, THE SITE AND FLOOR PLAN HAVE BEEN REMOVED;
PLEASE CONTACT THE DISTRICT FOR A COPY.

Program of Spaces NEW HIGH SCHOOL - LIBERTY HILL ISD Capacity - 1600 Students					
Space	Design Committee Recommendations				
	No. of Units	Unit S.F. (Net)	Area	Tchg Stat.	No. Stud.
STANDARD ACADEMIC CLASSROOMS					
a) English Classrooms	13	715	9295	13	325
b) Math Classrooms	13	715	9295	13	325
c) Social Studies Classrooms	13	715	9295	13	325
d) Foreign Language Classrooms	7	715	5005	7	175
Departmental Stor.	3	284	852	0	0
e) Health/P.E. Classrooms	1	706	706	0	0
Subtotal	50		34,448	46	1150
ACADEMIC LABORATORIES					
a) Computer Resource Lab	3	1100	3300	0	0
Credit Recovery Lab	1	1100	1100	0	0
b) Science					
1. Physical Science Lecture/Lab	2	1550	3100	2	50
2. Biology Lecture/Lab	4	1550	6200	4	100
3. Chemistry Lecture/Lab	2	1550	3100	2	50
4. IPC/Physics	1	1519	1519	1	25
5. Science Classroom	2	715	1430	2	50
6. Central Chem. Storage Room	1	284	284	0	0
5. Prep Rooms	5	233	1165	0	0
Subtotal	21		21,198	11	275
FINE ARTS					
a) Art Labs with storage and Kiln rooms	2	1520	3040	0	0
b) Dance (incl. sto room of 524sf)	1	1579	1579	0	0
c) Drama Classroom	1	1096	1096	0	0
d) Drama Shop	1	1390	1390	0	0
e) Drama Dressing Rooms	2	302	604	0	0
f) Stage with storage for Costume, Prop	1	3750	3750	0	0
g) Auditorium (seating for 900)	1	10395	10395	0	0
i.) Auditorium Lobby	1	2302	2302	0	0
h) Band Hall - incl. office, instr. sto., uniform sto., perc. practice and 5 prac. Rms	1	6544	6544	0	0
i) Choral Music (incl. office, prac. rooms, & stor.)	1	2317	2317	0	0
j) Music Office	1	0	0	0	0
k) Speech/Debate Classrooms	1	855	855	0	0
l) Journalism Classroom	1	720	720	0	0
m) Journalism Lab	1	1342	1342	0	0
Subtotal	16		35,934	0	0
BUSINESS, VOCATIONAL & TECHNICAL					
a) Business Classroom	0	800	0	1	25
b) Business Computer Labs	6	1050	6300	2	50
c) Family Consumer Sci. - Food Lab / Culinary	1	2843	2843	0	0
d) Family Consumer Sci. - Classroom	1	720	720	0	0
e) Student Store	1	325	325	0	0
f) CATE offices (Health, Crim. Just., Eng., Building Trades, Ag, Family Cons. Sci.)	5	144	720	0	0
g) Family Cons. Sci. - Family Lab (incl. mini-computer area for 12 stations, kitchen simulation, nursery, play, living area, & sewing area with large storage closet)	1	1360	1360	0	0
h) Health Sci. Classrooms (Bio Health)	1	1400	1400	0	0
i) Health Sci. Mini Computer Lab (12 stations)	0	450	0	0	0
j) Computer Repair Lab	1	266	266	0	0
k) Building Trades Classroom	2	715	1430	0	0
l) Building Trades Lab (locate near Tech Theater shop if poss.) includes tool room, locker rooms, storage, mini computer lab for 12.	1	2800	2800	1	25
m) Tech Applications - Computer Labs	0	1200	0	3	75
Subtotal	20		18,164	7	175
ATHLETIC SPACES					
a) Gymnasium - Practice, seating for 250	2	8112	16224	0	0
b) Main Spectator Gymnasium, seating for 1000	1	22463	22463	0	0
c) Boys Dressing Rooms (included above)					
1) Boys PE Locker Room	1	0	0	0	0
2) Boys PE Shower / Locker Room	1	0	0	0	0
3) Boys Team Locker Room (Fsh, JV and V)	3	0	0	0	0
4) Boys Team Shower / Restroom	2	0	0	0	0
d) Girls Dressing Rooms (included above)					
1) Girls PE Locker Room	1	0	0	0	0
2) Girls PE Shower / Locker Room	1	0	0	0	0
3) Girls Team Locker Room (Fsh, JV and V)	3	0	0	0	0
4) Girls Team Shower / Restroom	2	0	0	0	0
e) Training Room - incl. sto. and office	1	310	310	0	0
f) Coaches Office (for 8 coaches)- incl. shower (included above)	1	0	0	0	0
g) Coaches Conference Room (included above)	1	0	0	0	0
h) Weight Room #1	1	715	715	0	0
i) Film Room	1	0	0	0	0
Subtotal	22		39,712	0	0

Program of Spaces NEW HIGH SCHOOL - LIBERTY HILL ISD Capacity - 1600 Students					
SPECIAL SERVICES					
a) Life Skills	1	1250	1250	0	0
b) Life Skills Kitchen	1	0	0	0	0
Vocational Ed	1	750	750	0	0
c) Content Mastery	1	700	700	0	0
d) Resource Room	1	345	345	0	0
Reading	1	345	345	0	0
e) Behavior Resouce Classroom	1	700	700	0	0
f) Itenerant Services	0	0	0	0	0
g) Testing	1	715	715	0	0
h) Speech Therapy	0	0	0	0	0
i) ESL	0	0	0	0	0
Subtotal	8		4,805	0	0
ANCILLARY SPACES					
a) Library-Media Center (incl. Offices, sto.,conf)	1	5847	5847	0	0
b) Library Computer Lab	1	938	938	0	0
c) Distant Learning	1	934	934	0	0
i.) Break Room	1	255	255	0	0
d) AV Equipment Storage	1	130	130	0	0
e) Small Group Room	1	468	468	0	0
i.) Video Room	1	109	109	0	0
f) Individual Study Room	1	0	0	0	0
g) Periodical Storage	1	296	296	0	0
h) Workroom / Office	1	303	303	0	0
i) MDF	1	276	276	0	0
j) Cafeteria	1	10334	10334	0	0
k) Kitchen & Food Court	1	5022	5022	0	0
Subtotal	13		24,912	0	0
ADMINISTRATION-OFFICES					
a) Reception- AP & Counseling first floor	1	360	360	0	0
b) Assistant Principal Offices	2	169	338	0	0
c) AP Sec.	1	110	110	0	0
d) Main Reception	1	544	544	0	0
e) Conference Room	1	279	279	0	0
f) PIEMS	1	169	169	0	0
g) Attendance	1	129	129	0	0
h) Clinic (incl. waiting, exam, restroom, sto, office)	1	555	555	0	0
i) Principal's Office	1	242	242	0	0
j) Principal's Secretary	1	220	220	0	0
k) Tech Facilitator Offices	1	148	148	0	0
l) Break Room	1	541	541	0	0
Restrooms	2	50	100	0	0
m) Teacher Copy	4	173	692	0	0
n) Registrar Office	1	223	223	0	0
o) Registrar Secretary	1	124	124	0	0
p) Counselor Waiting	2	0	0	0	0
Career Center	1	199	199	0	0
q) Counselor Conference	1	166	166	0	0
r) Counselor Offices	5	167	833	0	0
s) Workroom	4	646	2584	0	0
t) Book Room with staff restrooms	1	953	953	0	0
u) Counselor Secretary	1	85	85	0	0
v) Test Storage	1	121	121	0	0
w) Vault	1	220	220	0	0
x) Security Office	1	83	83	0	0
y) In-school Suspension Room	1	568	568	0	0
z) Central Supply Storage	1	1023	1023	0	0
aa) Spec. Ed. Counselor/Diagnostician Office	1	160	160	0	0
bb) Spec. Ed. Counselor Secretary	1	160	160	0	0
cc) Speech Office	1	160	160	0	0
Subtotal	44		12,089	0	0
TOTAL NET S. F.			191,262	64	1,600
Commn Area Factor			89,274	0	0
TOTAL MAIN BUILDING GROSS S. F.			280,536	64	1,600
Athletic Out-Buildings					
a) Football Field House	1	17867	17867		
b) Baseball Field House	1	9554	9554		
c) Tennis Field House (Included in BB/SB FH)	1	0	0		
d) Stadium Press Box	1	2911	2911		
e) Stadium Concession	2	4352	8704		
f) Stadium Ticket Booths	3	87	261		
g) Baseball Press Box and Concession	1	200	200		
h) Baseball Ticket Booth (Included in BB/SB FH)	1	0	0		
i) Softball Pressbox and Concession	1	200	200		
j) Softball Ticket Booth (Included in BB/SB FH)	1	0	0		
SUBTOTAL			39,697	0	0
TOTAL GROSS S. F.			320,233	64	1,600



Schedule